



Fire Protection Engineering  
Mechanical/Electrical/Plumbing  
Engineering  
Code Consulting

# Entertainment Facilities

FSC provides professional engineering and code consulting services for the following types of Entertainment facilities:

- Convention Centers
- Casinos and Resorts
- Restaurants, Bars, Clubs
- Theaters and Museums
- Water Parks



***FSC, Inc.***

***Corporate Headquarters:***

3100 South 24th Street, Suite E  
Kansas City, KS 66106 U.S.A.  
Tel: (913) 722-3473  
Fax: (913) 722-3484

***Subsidiaries:***

**FSC MEP Engineers, LLC**

8511 Hillcrest Road, Suite 100  
Kansas City, MO 64138 U.S.A.

**FSC Bredson, Inc.**

8511 Hillcrest Road, Suite 100  
Kansas City, MO 64138 U.S.A.

**FSC Engineers, Pvt. Ltd.**

221 Bisarya Complex  
Bhopal - 462011 M.P. India

**FSC Consulting Services, Pvt. Ltd.**

221 Bisarya Complex  
Bhopal - 462011 M.P. India

**Web: [www.fsc-inc.com](http://www.fsc-inc.com)**

Since 2000, downtown Kansas City, Missouri has undergone a major urban redevelopment. FSC has contributed to the approximately \$4.5 billion investment by providing our expertise on the new Power & Light Entertainment District and the expansion and renovation of the Bartle Hall Convention Center as well as IMAX Theaters, Science City at Union Station, Hospitality and Restaurant venues.



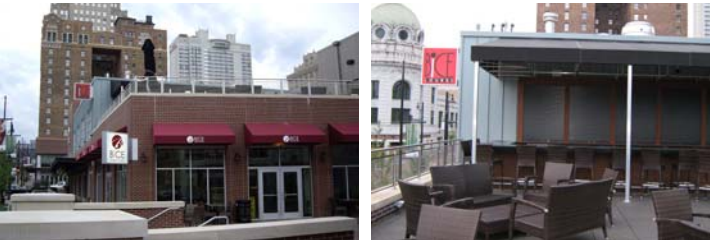
**Kansas City Power & Light LIVE District  
Kansas City, MO**

MEP services for the renovation of two blocks, 124 and 125, in the new downtown Kansas City Power & Light District, which includes retail spaces, restaurants, theaters and a new 130-space parking garage.

- Detailed field survey to ascertain actual conditions.
- Design of HVAC for proper air distribution including equipment and environmental controls.
- Design of plumbing systems including equipment and controls.
- Design of ventilation system for removal of gas including CO controlled garage system, as required.
- Design of electrical systems including normal and emergency power distribution.
- Design of specialty systems such as fire alarm, overhead paging, security, communication, etc.
- Design of normal and emergency lighting systems including controls and code-required egress lighting using energy efficient methods.
- Design of emergency backup system as required.

**BiCE Bistro  
Lounge and Italian Cafe  
Kansas City, MO**

MEP design for the tenant finish of a new 5,500 sq. ft. Italian restaurant in the west building of Block 125 of the Kansas City Power & Light District.



**Schlitterbahn Vacation Village & Waterpark  
Kansas City, KS**



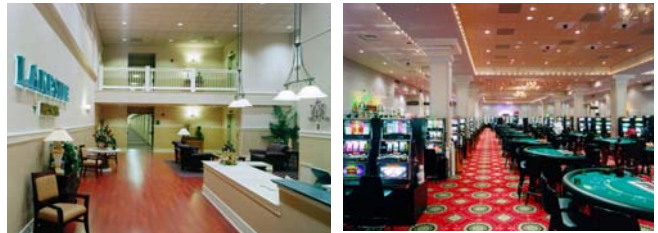
MEP and Fire Protection services for this year-round, trend-setting, mixed-use retail entertainment destination comprising of indoor & outdoor water parks, a high-rise hotel, lodging components, multiple shopping, dining, and entertainment venues on 370 acres.

Our services included design of buildings for the outdoor water park, twelve different types of Cabins, and a one-bedroom Treehaus. *This project was ranked #2 in issue July 4-10, 2008 of the "Top Area Construction Projects" in the Kansas City Business Journal.*



**Argosy Casino Expansion  
Kansas City, MO**

Code Consulting to evaluate the existing level of code conformance and to provide guidance for renovation and expansion of the gaming floor, which features 1,850 slots and 48 table games. (Penn National Gaming).



**Lakeside Hotel & Casino  
Osceola, IA**

- MEP design of 83,330 sq. ft. hotel/conference center containing 60 suites, meeting rooms, indoor pool, & corporate offices.
- MEP design of 17,000 sq. ft. restaurant/bar & casino containing a 72 seat indoor bar, 68 seat outdoor bar, 194 seat buffet, 88 seat steakhouse and kitchen.
- MEP design of 35,750 sq. ft. floating casino.
- Exterior decorative, accent and fundamental lighting for the land-based hotel building and floating casino.



**Frontier Casino  
St. Joseph, MO**

- MEP design of 25,000 sq. ft. land building containing lobby, meeting rooms, galleria, casino entry foyer, buffet, bar, kitchen, & receiving.
- MEP design of 34,000 sq. ft. floating casino containing gaming areas and corporate offices.

**Sac & Fox Casino  
Reserve, KS**

MEP services Indian Nations Casino.

**Wyandotte Indian Nation  
Travel Casino  
Kansas City, KS**

HVAC design for the 75,000 sq. ft. Indian Nation Casino.



**H&R Block ‘Copaken Stage’  
Missouri Repertory Theater &  
Outdoor Terrace**

FSC provided MEP/Fire Protection and Code Consulting services for this intimate state-of-the-art theatre with seating for 320 and an inviting courtyard entry with sculptures and seating.



**Uptown Theater  
Kansas City, MO**

Renovation and addition to existing theater. Provided full code consulting which included an assessment of the existing egress system and the impact of the addition on the public areas and the



**AMC Theaters**

**Various locations - Kansas City, MO**

MEPF design services for 14-18 Theatre Megaplexe (@75,000 sq. ft.) including a concession area, mezzanine level with a projection booth, stadium-style seating and an office area.

**Midland Theater  
Kansas City, MO**

Provided code consulting for existing and new design documents and review of Life Safety Plans.



**IMAX Theater  
Monterey, CA**

**Starlight Theater  
Kansas City, MO**

MEP design for Concessions, Toilets and Box Offices.

**Gladstone Amphitheater  
Gladstone, MO**

Electrical design services for the new 2,400 sq. ft. amphitheater.

**Seville Square Theaters  
Kansas City, MO**

Renovation of existing building to house 12 movie theaters. Provided full code consulting for this change of occupancy project which included providing guidance to design a complex egress system that incorporated compartmentalization principles, for theaters located on the third story.

**Flint Hills Discovery Center  
Manhattan, KS (2009)**

Code consulting services for Bowman Bowman Novick Architects. Building features: Circular lobby connects exhibit entry and store on 1st floor, with direct connections to exhibits, café and community rooms on the upper floors. Curvilinear, stepped accessible **green roof** forms with connecting ramps, outdoor exhibit and activity areas (Rock climbing walls, play areas, etc.)

*Designed to Gold LEED rating*



**H. Roe Bartle Hall Convention Center (2006)  
Ballroom Expansion, Parking Garage & Tunnel Connector  
Kansas City, MO**

MEP and FP design services including:

- Renovation of existing meeting rooms and associated support areas.
- Addition of a new 40,500 GSF ballroom with adjoining spaces totaling to 125,000 GSF including kitchen, staging/catering pantry, storages, bathrooms, etc.
- New tunnel connecting to the Municipal Auditorium.
- A new 1300 car parking garage below the ballroom.

MEP services included:

- Detailed site investigations to determine location and condition of existing equipment, piping, and air distribution systems.
- Design for new air handling system including exhaust with new and improved air distribution.
- Integration and coordination of new equipment and systems into the existing systems.
- Design for the upgrade of the public toilets to ADA using new water conserving fixtures with electronic faucets and waterless urinals.
- Design of energy efficient interior and exterior lighting including high-bay lighting for equipment service area.
- Design of wet sprinkler system by extending the existing system.
- *Design of MEP systems for “Silver” LEED rating.*

**Nelson-Atkins Museum of Art  
Kansas City, MO**

Provided code guidance, worked on alternate methods and performed fire and smoke modeling for the addition to existing museum, which was a non-conforming building.

**Union Station / Science City Museum  
Kansas City, MO**

FP design services for the 500,000 sq. ft., multi-story renovation of the historical train station being used as a multi-use science museum exhibit space, entertainment and commercial complex that included live performance theater, large screen theater, planetarium, public space, offices and supporting areas.





**Plaza III  
The Steakhouse Restaurant  
Leawood, KS**

MEP design services for a new 13,000 sq. ft. restaurant. The space is composed of dining area (open and private), bar and kitchen.

**Plaza III  
The Steakhouse Restaurant  
Kansas City, MO**

MEP design services including: renovating the lower level with a new bar, rest rooms and dining area as well as renovation of the lower kitchen to accommodate a charcoal grill.

**Brookville Hotel & Restaurant  
Junction City, KS**

MEPF services for the relocation of the historic Brookville Hotel & Restaurant from Brookville, KS to Junction City, KS. The hotel portion of the facility was omitted, but the original name was maintained. Care was taken to retain the historic character of the old west design as originally established.



**Kearney Banquet Center  
Kearney, MO**  
MEP services



**Pachamama's Restaurant  
Lawrence, KS**

MEP design for a new 4,750 sq. ft. building including lounge, wine cellar, dining room, and full service kitchen. Modern, unique space with rustic brick walls, warm lighting & plush seating in downtown Lawrence.



**Army & Air Force Exchange Service (AAFES) (2005)  
Nellis Air Force Base, NV and Las Vegas, NV**

Fire Protection services for the following restaurants:

- **Burger King**
- **Popeye's Chicken**

**Pretzel Time**

- Jefferson City, MO
  - Joplin, MO
  - Columbia, MO
- MEP services for 3 franchise locations.



**Culver's Restaurant  
Olathe, KS**  
MEP services

**Kenny Roger's Restaurant  
Overland Park, KS**  
MEP services

**Lawson Auditorium Addition  
Lawson, MO**  
MEP services

**International Trade Center  
Overland Park, KS**  
MEP design services for an 80,000 SF suburban trade center. Designed with high ceilings, wide loading portals, and an open floor plan to optimize event flow.



**Memorial Hall  
Joplin, MO**

MEP design services including:

- Study and report on the condition of the existing HVAC systems.
- Replacement of Air Handling Units
- New Building Automation Systems

**Sutera's Restaurant  
Westwood, KS**  
MEP services

**Stadium Pub  
Akron, OH**

MEP design for a new 5,500 sq. ft. full service seating establishment attached to a minor league baseball stadium with a 2,000 sq. ft. dining deck.



Fire Protection Engineering  
Mechanical/Electrical/Plumbing  
Engineering  
Code Consulting



# Retail Facilities



## **Kansas City Power & Light District Kansas City, MO**

MEP services for the renovation of two blocks, 124 and 125, in the new downtown Kansas City Power & Light District, which includes retail space, restaurants and a new 130-vehicle parking garage.

## **Prairiefire at Lion's Gate Overland Park, KS**

Code Consulting for new seven-building, \$575 Million mixed-use complex. Six of the seven buildings house a parking garage, street level retail spaces, and offices or residential units above the retail space. The development includes the nation's first museum for hosting traveling exhibitions of New York's American Museum of Natural History.

## **Southridge Retail Shops Overland Park, KS**

Fire Protection design for two new "shell" package buildings totaling approximately 36,000 sq ft.

## **The West Edge Kansas City, MO**

Fire protection design services for 789,000 sq ft. combination office, hotel, retail and garage building. The office/retail area has 10 floors, the hotel has 8 floors and a 6-level garage.



## **Falcon Valley Shopping Center Tenant Finish Lenexa, KS**

MEP engineering design services for the following tenants:

- Curves
- Wilcox Cleaners
- Falcon Valley Animal Hospital & Veterinary Clinic



### **FSC, Inc.**

#### **Corporate Headquarters:**

3100 South 24th Street, Suite E  
Kansas City, KS 66106 U.S.A.  
Tel: (913) 722-3473  
Fax: (913) 722-3484

#### **Subsidiaries:**

##### **FSC MEP Engineers, LLC**

8511 Hillcrest Road, Suite 100  
Kansas City, MO 64138 U.S.A.

##### **FSC Bredson, Inc.**

8511 Hillcrest Road, Suite 100  
Kansas City, MO 64138 U.S.A.

##### **FSC Engineers, Pvt. Ltd.**

221 Bisarya Complex  
Bhopal - 462011 M.P. India

##### **FSC Consulting Services, Pvt. Ltd.**

221 Bisarya Complex  
Bhopal - 462011 M.P. India

Web: [www.fscmep.com](http://www.fscmep.com)



### Wal-Mart Stores

#### Various Locations, India

MEP and FP design for four prototype stores in India and review of MEP site adapt designed by local engineering firms.

- Supermarket - 2,500 - 3,000 sq ft.
- Compact Hypermarket - 30,000 sq ft.
- Cash & Carry - 50,000 sq ft.
- Cash & Carry - 85,000 sq ft.

### Wal-Mart Super Centers 5 locations in the USA

MEP engineering design services for the Wal-Mart Supercenters format. These hypermarkets include a full service grocery store in addition to the discount center and average 197,000 sq. ft.



### Costco - Midtown Kansas City, MO

MEP engineering design services for new warehouse store.

### Pier One Imports

MEP engineering design services for the following locations:

- Ward Parkway Mall - **Kansas City, MO**
- Shawnee Mall - **Shawnee, KS**
- Hartman Heritage Center - **Independence, MO**

### Best Buy

#### Wichita, KS

Fire Protection design services for a 31,000 sq ft. retail facility.

### Army & Air Force Exchange Service (AAFES) Fort Irwin, CA

Fire Protection engineering design for a new expansion and remodel of a 79,100 sq ft. single-story shopping center on a U.S. Army Post.

### Army & Air Force Exchange Service (AAFES) Nellis Air Force Base, NV and Las Vegas, NV

Fire Protection engineering design services for the following restaurants:

- **Burger King**
- **Popeye's Chicken**

### Whiteman Air Force Base Consolidated Commercial Building Knob Noster, MO

### 84 Lumber Company USA - 66 Locations Nationwide

Indefinite Delivery Contract for FP design services for new retail lumber stores including the sprinkler layout, site adapt design, and hydraulic calculations.



### The Pavilions at the Hartman Heritage Center Independence, MO

MEP engineering design services for the following retail stores:

- **Bed Bath & Beyond**
- **SteinMart**
- **World Market**
- **Ultimate Electronics**
- **Linens-N-Things**
- **Dress Barn**
- **Pier One Imports**



### Oasis Salon and Day Spa Joplin, MO

MEP services for the renovation of an existing 5,000 sq ft. building and 2,150 sq ft. expansion for a new salon and day spa.

### The Broadfield Center Columbia, MO

MEP engineering design services for a neighborhood shopping center.

### Bass Pro Shops Olathe, KS

MEP engineering design services for Outdoor World Sporting Goods Retail Store.



### Old Navy

#### Lawrence, KS

MEP engineering design services for new men's, women's and children's clothing store.



### Professional Sports Team Retail Stores

MEP engineering design services for the following Professional Sports Teams:

- **Tampa Bay Devil Rays Team Store**  
St. Petersburg, Florida
- **Washington Red Skins Team Store**  
Landover, MD
- **Angels Team Store**  
Anaheim, CA
- **Padres/Mariners Spring Training Facility Team Store**  
Peoria, AZ
- **Cubs Spring Training Facility Team Store**  
Mesa, AZ
- **Cardinals/Expos Spring Training Facility Team Store**  
Jupiter, FL
- **"A" Yankees Team Store**  
Staten Island, NY
- **"AA" Indians Team Store**  
Akron, OH
- **Ripkin Minor League Stadium Team Store**  
Aberdeen, MD
- **Surprise Tennis & Racquet Complex Retail Store**  
Surprise, AZ



**Additional FP projects:**

- **Walgreens** (5 locations in the USA)
- **Target Stores** (2 locations in Alaska)
- **Aldi's Food Stores** (3 locations in the USA)
- **Subway Shops** (3 locations in the USA)
- **Tony's Pizza**, Salina, KS

**Additional MEP projects:**

- **Firestone Tires** - (3 locations in KS & MO)
- **Lowe's** - (2 locations in the USA)
- **Famous Footwear** - Lawrence, KS
- **Retail Center Addition** - Kansas City, MO
- **Marty's Coffee Shop** - Kansas City, MO
- **Osco Drug Store** - North Kansas City, MO
- **Blue Springs Retail Space** - Blue Springs, MO
- **Rattan Development** - Kansas City, KS
- **Randy Reed Chevrolet** - St. Joseph, MO
- **Lane Bryant** - St. Joseph, MO
- **Quick Trip** - Locations Nationwide-USA



Fire Protection Engineering  
Mechanical/Electrical/Plumbing  
Engineering  
Code Consulting

---

**FSC, Inc.**

**Corporate Headquarters:**  
3100 South 24th Street, Suite E  
Kansas City, KS 66106 U.S.A.  
Tel: (913) 722-3473  
Fax: (913) 722-3484

**Subsidiaries:**

**FSC MEP Engineers, LLC**  
8511 Hillcrest Road, Suite 100  
Kansas City, MO 64138 U.S.A.

**FSC Bredson, Inc.**  
8511 Hillcrest Road, Suite 100  
Kansas City, MO 64138 U.S.A.

**FSC Engineers, Pvt. Ltd.**  
221 Bisarya Complex  
Bhopal - 462011 M.P. India

**FSC Consulting Services, Pvt. Ltd.**  
221 Bisarya Complex  
Bhopal - 462011 M.P. India

**Web: [www.fsc-inc.com](http://www.fsc-inc.com)**

---



# Mixed-Use Development



## **The West Edge Kansas City, MO**

Fire protection design services for 789,000 sq. ft. mixed use office, hotel, retail and garage building complex. The 10-story office/retail towers combines with an 8-story boutique hotel and a 6-level parking garage on the west edge of the Country Club Plaza shopping entertainment district.



## **Market Lofts Overland Park, KS**

MEP design of new 5-level mixed-use building including:

- Lower level (underground) Parking Garage.
- First level Retail space. Second & Third level finished Lofts. Fourth level Penthouse.

## **Paintball Building Condominiums Springfield, MO**

Electrical design, including lighting and new fire alarm system, for conversion of existing three-story building to retail and condominiums.

## **Kresege Building Complex Springfield, MO**

Electrical design, including lighting and new fire alarm system, for conversion of three existing buildings to condominiums and retail.

## **Prairiefire at Lionsgate Overland Park, KS**

Code Consulting for new seven-building, \$575 Million mixed-use complex. Six of the seven buildings house a parking garage, street level retail spaces, and offices or residential units above the retail space. The development includes the nation's first museum for hosting traveling exhibitions of New York's American Museum of Natural History.

## **Power & Light Condominiums Kansas City, MO**

Code Consulting for a new 16-story high-rise with garage, street level retail and rooftop pool.

## **Block 110 Condominiums Kansas City, MO**

Code Consulting for new 20-story high-rise with garage, pool, health club and grocery store.

## **Wellington Place East Condominiums Kansas City, MO**

Fire Protection and Code Consulting for twin towers. Each tower is 15 stories with a garage, health club, street level retail, and offices.

## **The Waterwalk Place Wichita, KS**

Fire protection design services for new condominium/retail complex, which includes: 12 three-story condominiums, 36 one-story condominiums, 14 retail spaces and a five-story 500 space parking garage.

